



SNT SYSTEMS PVT. LTD.

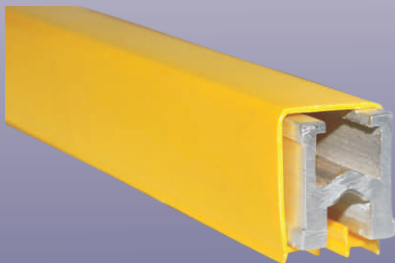
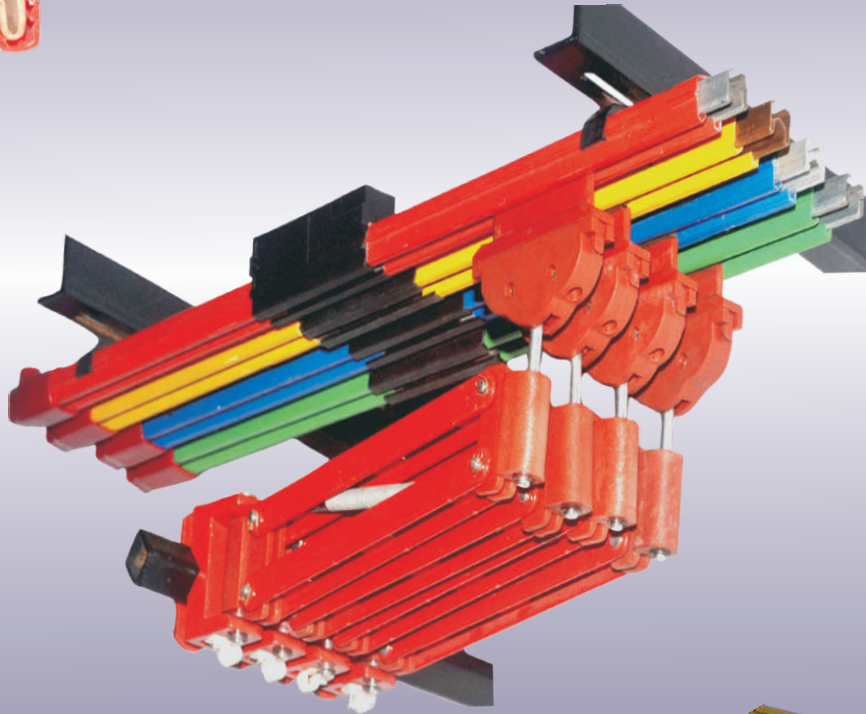
Safety and Technology ... Simply Ahead ...



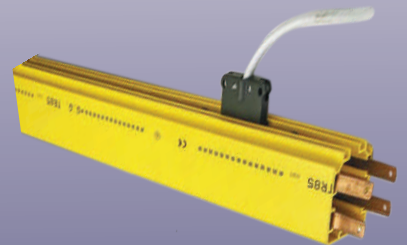
Safelink - SLB
60-400 Amps



Safelink - SLP
100-315 Amps



Safelink - SLV
Heavy Bar
500-2000 Amps



TR 85
Box Type DSL
40-200Amp

Plot No. 4407, G.I.D.C., Vatva, Phase IV, Ahmedabad - 382445

Tel : 228516819/28560893, Fax: 28595196 E-mail: mail@sntrrc.com Web Site: www.sntrrc.com

Head office: 115 Acharya Industrial Estate, Tej Pal Compond,
Andheri - Kurla Road, Sakinaka, Mumbai - 400072.

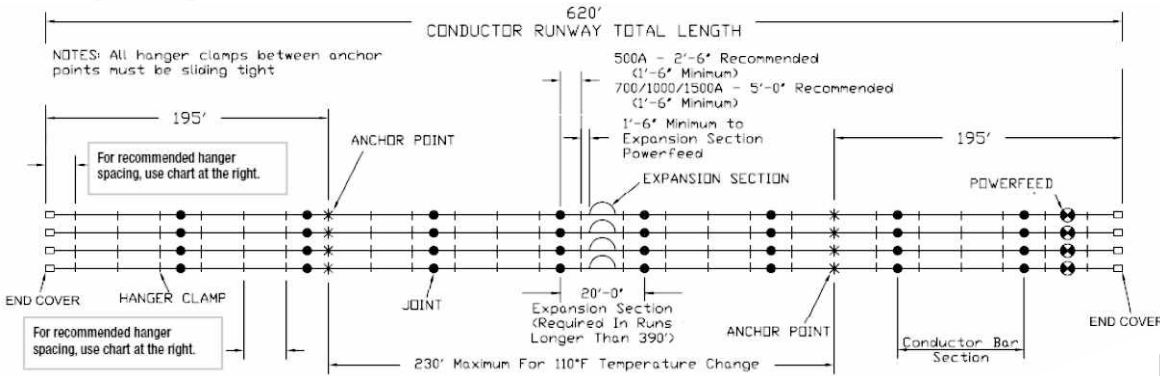
Heavy Conductor Bar System

SYSTEM ARRANGEMENT FOR SAFELINK (500-2000Amps)



NOMENCLATURE

- CONDUCTOR BAR
- SPLICE JOINT
- EXPANSION SECTION
- PICKUP GUIDE OF TRANSFER CAP
- END COVER
- HANGER CLAMP
- ANCHOR LOCATION
- POWERFEED



SYSTEM	FIRST HANGER	MAX. HANGER SPACING
500 AMP	2'-6"	5'-0"
700 AMP	3'-9"	7'-6"
1000 AMP	5'-0"	10'-0"
1500 AMP	5'-0"	10'-0"

Safelink SLV:- Insulated Conductor bar are used for power Transmission. Current Capacity from 500 to 2000Amps. rated at 100% duty cycle and nominal voltage upto 600V. Conductor bar provide a safe and economical power for safe track guided mobile Machinery.

FEATURES

- Insulated Conductor bar and touch proof.
- Quick & easy Installation.
- 500,800,1000,1250 & 2000 Amps. in same standard.
- 500,800,1000 Amps Aluminium/ Stainless Steel.
- 500,800,1000,1250,2000 Amps Copper.
- No expansion joint upto 200meter long.
- Horizontal / Vertical Installation.
- Spring loaded current Collector 250A / 500A.

Technical Data Safe link-SLV-Heavy Conductor Bar System

Type	Copper					Aluminum / Stainless Steel		
	SLVC	SLVC	SLVC	SLVC	SLVC	SLVA	SLVA	SLVA
Nominal Current	500A	800A	1000A	1250A	2000A	500A	800A	1000
Maximum System Voltage AC or DC	600V	600V	600V	600V	600V	600V	600V	600V
Resistance R (For DC) At 35° C (Ω/m)	0.000104	0.000057	0.000033	0.000022	0.000011	0.000097	0.000074	0.000051
Impedance Z (For DC) At 35° C (Ω/m)	0.000161	0.000136	0.000127	0.000094	0.000061	0.000157	0.000144	0.000137
Bar Length	4.5m	4.5m	4.5m	4.5m	4.5m	4.5m	4.5m	4.5m
Support Pitch Standard	2250mm					2250mm		
Min Pitch Center Standard	80mm	80mm	80mm	80mm	80mm	80mm	80mm	80mm
Temperature	Standard (Red, Yellow, Blue & Green) (160°F (71.1°C))					Medium (Heat) (250°F (121.1°C))		
Material	PVC					Polycarbonate		
Dielectric Strength	180Kv/cm					240Kv/cm		
Flame Test	Self extinguishing					Self extinguishing		

Note :- Expansion Section 200m.

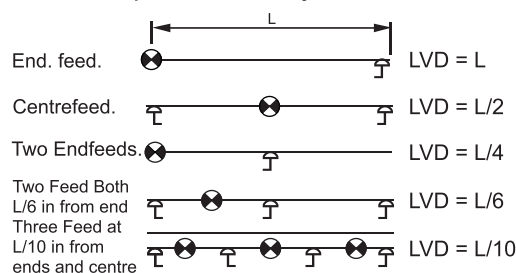
TECHNICAL PARAMETER COMMON TO ALL

Current capacity factor for different ambient temperature

Ambient temperature		35°C	40°C	45°C	50°C	55°C	60°C	65°C	70°C	75°C	80°C	85°C
Standard Insulation	Aluminium rail	1.0	0.92	0.81	0.76	0.68						
	Copper rail	1.0	0.93	0.87	0.82	0.78						
High Temperature Insulation	Aluminium rail					1.0	0.92	0.81	0.76	0.68	0.63	0.59
	Copper rail					1.0	0.93	0.87	0.82	0.78	0.74	0.72

Selection of feed-in points : The feed-in point for every application must be selected because the length rail end is used for calculating the voltage drop.

feed-in points can normally be used.



Voltage Drop

The allowable volt drop determines, the maximum allowable resistance of conductor. The value of volt drop within a conductor system is effected by effective length of system and current drawn.

Volt Drop Calculation

For A. C. Machine 3 phase
 ΔU Volt drop = length (D) x Impedance (Z)
 \times Current (I) $\times \sqrt{3}$
 $U \% = \frac{\Delta U}{U_n} \times 100$ [%]

CURRENT COLLECTOR

SAFELINK Current Collectors Data Sheet			
Type	SLCC - 60	SLCC - 125	SLCC - 250
Current Rating	60A	125A	250A
Collector Movement	± 125 ± 50	± 200 ± 60	± 200 ± 60
Mounting Bracket	16Sqm bar	25Sqm bar	25Sqm bar
Mounting Distance from Conductor contact surface	100mm	127mm	127mm
Construction	1 Pole	1 Pole	1 Pole
Spring Loaded Contacts with Springs of non Rusting	Stainless Steel	Stainless Steel	Stainless Steel
Sintered Copper Shoe	125A	125A	125A
Shoe Holder	Nylon	Nylon	ABS
Structure	Metallic	Metallic	Metallic
Suitable to use on Safelink Conductor System On Straight Track	SFM (100/125/250/315A) SFW (60/100/125/160/250/400A)	SFM (60/100/125/160/250/400/200/315A) SFV (500/800/100A)	
On Curved Track	SFM (100/125/250/315A) SFW (60/100/125/160/250/400A)	SFM (60/100/125/160/250/400/200/315A) SFW (60/100/125/160/250/400A)	
Higher Currents	Two Collectors in Tandem to be used for higher current requirements and for expansion assemblies		

Radio Remote Cotrols



SPORT



IT 301/302



IT 401/402



IT 401D/402D



IT 501/502



F24



IT 401T/402T



STAR



MASTER

Some common features :

Operating Frequency	UHF(310.00 to 336.00 Mhz)
Operating Range	100m (except SPORT = 60m)
Channel Spacing	25KHz
RF Power Output	10mW
Response Time	<24 ms
Active Emergency Responding Time	<24 ms
Hamming Distance	>=6
Power Consumption	<15mA
Standby Power Consumption:	<1mA
Battery	2 AA Size Alkaline Battery
Operating Temperature	-20° C to 70° C
Coding Key	FMSK
Modulation	Frequency Modulation

RECEIVERS



UP TO 8 RELAY OUTPUT

Wiring: 13 PIN Connector
Dimension: 230x125x65 mm
Weight: 1.1 Kg



UP TO 21 RELAY OUTPUT

Wiring: 26 PIN Connector
Dimension: 270x200x90 mm
Weight: 1.8 Kg



UP TO 24 RELAY OUTPUT

Wiring: 48 PIN Connector
Dimension: 260x250x90 mm
Weight: 2.5 Kg

IMET Radio Remote Control Systems



WAVE L



WAVE S



ARES C



ARES E

ZEUS RANGE



ZEUS B2



ZEUS M6



ZEUS NJ

SPECIAL APPLICATIONS



ZEUS B3



ZEUS M8



ZEUS B4



ZEUS NJ II

Crane Control Gears



Rotary Gear
Limit Switch



FG Rotary Gear
Limit Switch



Rotary Gear
Limit Switch



Rotary Gear
Limit Switch



Lever Type
Limit Switch
LS/10/SH/2



Lever Type
Limit Switch
LS/40/SH/A



Lever Type
Limit Switch
LS/40/SH/A



Lever Type
Limit Switch
LS/40/SH/A



Counter Weight
Limit Switch/
Gravity : CWLS/1/SH/2



Counter Weight
Limit Switch/
Gravity CWLS/A/SH/2



Counter Weight
Limit Switch/
Gravity : CWLS/A/SH/2



Cross Bar
Limit Switch



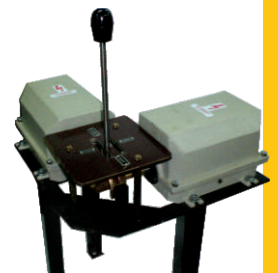
Master Controller (IP54)



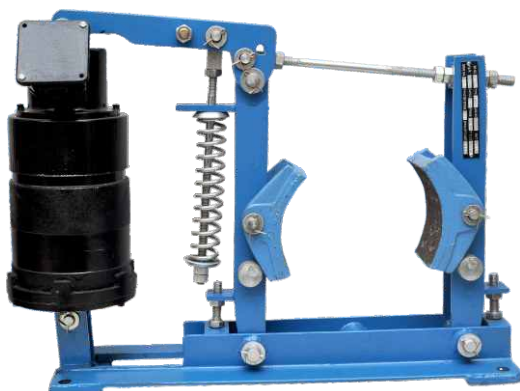
Master Controller



Dual Master Controller



Universal Master



THRUSTER BRAKE



JOYSTICK



DBR / RESISTANCE BOX

Festoon System

FestoonSystem-Line30

Series 30:

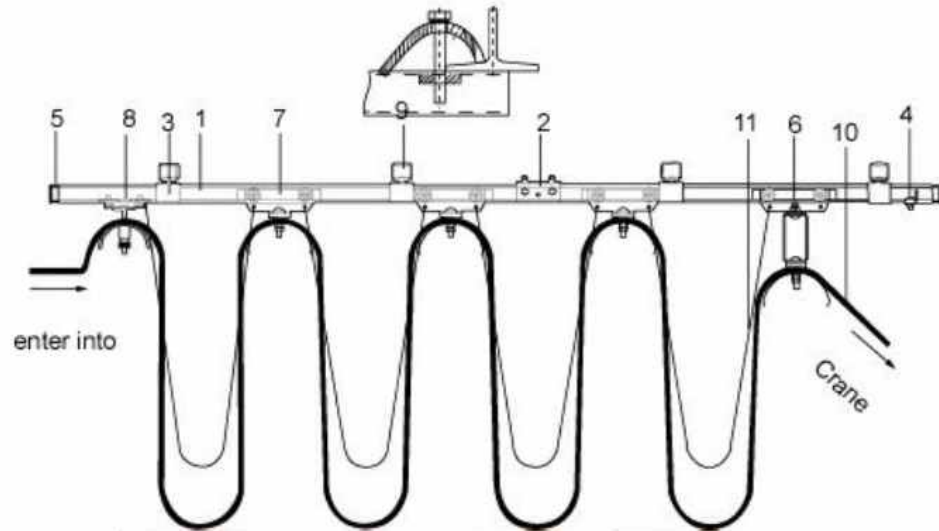
Applications : Moving Pendant Systems, Cross travel for cranes, Energy and Data transmissions for various applications.

Line 30 Characteristics are:

- Bar Height: 30 mm
- Load Capacity: 100 kg/m

System photo

- 1 C-Track
- 2 Joint
- 3 Hanger
- 4 End stop
- 5 End cap
- 6 Towing Trolley
- 7 Middle Trolley
- 8 End Trolley
- 9 Bracket Support
- 10 Cable
- 11 Steel wire



FESTOON SYSTEMS PARTS



C-Rail Bar



Support arm bracket



Trolley with safety plug and socket connection



Rail - Joint



End Stop



Towing trolley



Rail support bracket



Towing trolley



Track Support Bracket